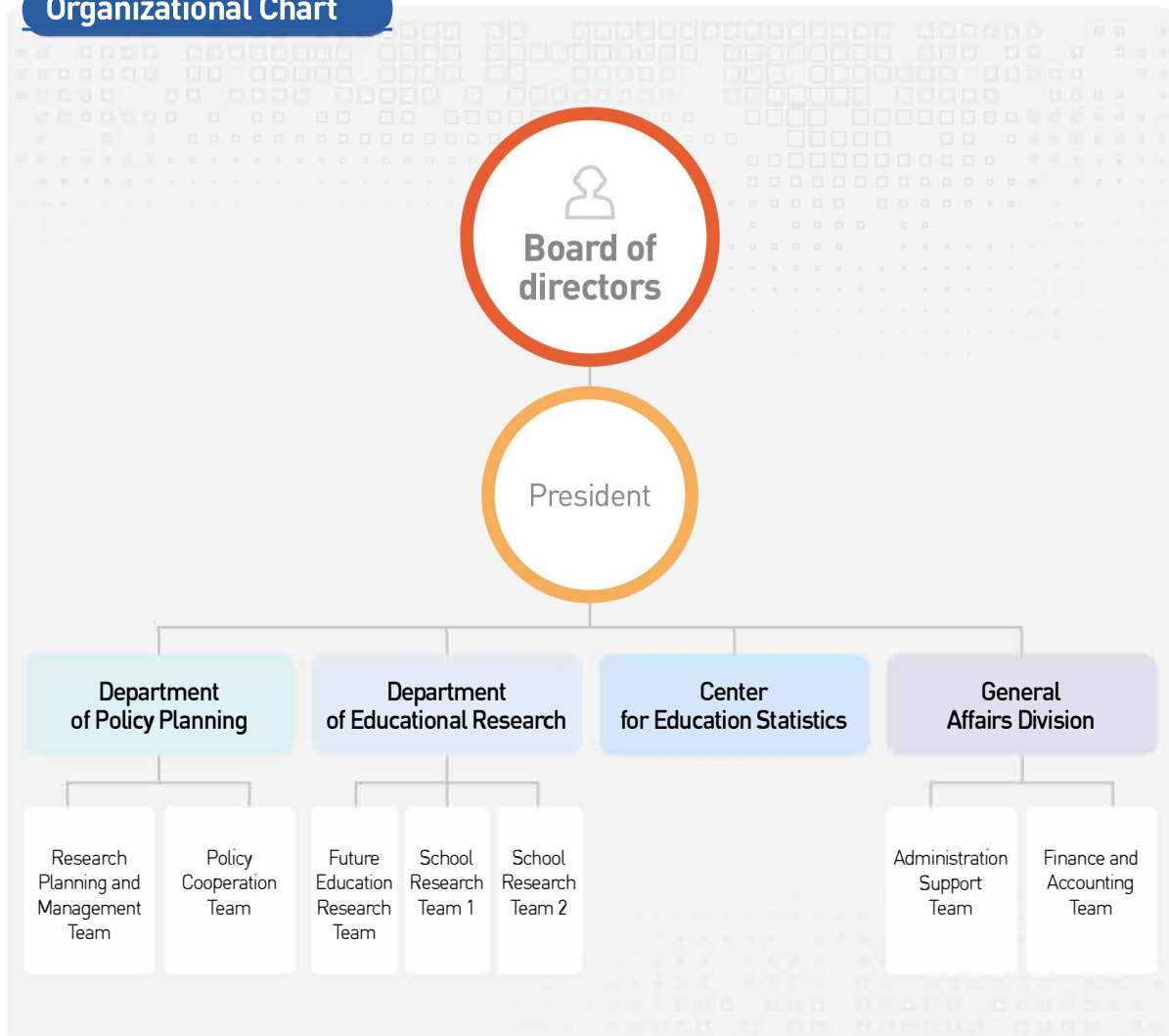


Think Tank leading future society with education innovation

Gyeonggi Institute of Education



Organizational Chart



Periodicals

Gyoyuksiseon Oneul

(Eye on Today's Education)

Analysis of pending educational issues and search of exploration of alternative educational plans based on research results

Today's Education by Statistics

Provide scientific research evidence based on educational survey and data analysis to diagnose current education and establish education policies

Basic direction

Vision

Think Tank contributing to social innovation through educational innovations research

Mission

Leading education in Korea through on-site Gyeonggi educational research

Core Values



Future-oriented

Promote forward-looking research for a new paradigm of future education



Together

Pursue accompanied growth through cooperation with domestic and overseas research and educational policy organizations



Leader

Lead Korean education by sharing Gyeonggi outstanding research outcomes and best practices



On-site

Conduct research responding to the needs and demands of educational agencies



Local

Implement customized research reflecting the characteristics of Gyeonggi Province



Medium-term Management Goals

- ▶ Strengthen R&D for educational innovation
- ▶ Disseminate research findings and enhance their utilization for policy making
- ▶ Reasonable organization management based on firm trust

Strategy and Action plans (draft)

(Medium-Term) Management goal	Strategy	Action plans
Strengthen R&D for educational innovation	Strengthen research for sustainability and expansion of innovative education	<ul style="list-style-type: none"> ▶ Promote research for sustainability and qualitative development of innovative education ▶ Strengthen research for expansion of innovative education ▶ Promote research on educational autonomy and decentralization
	Strengthen R&D for future education	<ul style="list-style-type: none"> ▶ Conduct follow-up research to establish 4・16 education system ▶ Expand future education discourse and promote policy research ▶ Promote research for education equality and educational justice
	Strengthen close-contact research in the community and education field	<ul style="list-style-type: none"> ▶ Identify and promote community-based and close on-site contact research topics ▶ Conduct research that reflects educational needs of students, parents, and teachers, and expand their involvement opportunities
Disseminate research findings and enhance their utilization for policy making	Promote research performance and system establishment to enhance policy utilization	<ul style="list-style-type: none"> ▶ Establish an online system to share research findings ▶ Systemize and diversify research performance promotion methods ▶ Enhance policy utilization of research findings
	Establishment of research network infrastructure on domestic and international education policy	<ul style="list-style-type: none"> ▶ Expansion of research performance through active participation in the education policy research network ▶ Establish foundation for global network expansion
Reasonable Organization Management based on firm trust	Organization management that promotes cooperation and communication	<ul style="list-style-type: none"> ▶ Modify main consultation・decision making organization ▶ Operate various and creative programs to promote harmony among members
	Organization (management) system to enhance rationality and autonomy	<ul style="list-style-type: none"> ▶ Reform the research-focused organization (management) system ▶ Secure research and administrative personnel ▶ Standardization and simplification of research support tasks
	Establish support system that promotes growth of individual members	<ul style="list-style-type: none"> ▶ Establish training system for competence development of research and management personnel ▶ Fair and systematic management of personnel, promotion, performance management ▶ Provide opportunities of recharge for research and management personnel

Research project

01

Basic research project

As original project for researchers, research project to present mid and long term policy vision for Gyeonggi education and for education development and academic contribution



02

Policy research project

Pending research subject of Gyeonggi education found by researcher oneself or research project requested by Gyeonggi-do Education Office for political consideration such as policy establishment, change of existing policy, etc

03

Short-term research project

Research project such as pending issue report, issue paper, technical report, etc. carried out by the business cooperation request of Gyeonggi-do Education Office or decision of the researcher oneself

04

Commissioned research project

Research project carried out through service contract by the request of research from external organization

05

Commissioning research project

Research project carried out by entrusting to external organization or expert



06

Technical report

Report of research and project result related to Gyeonggi education longitudinal research, survey of education status, etc

※ Pending issue report: short term research project of 3 months or less that is done for survey analysis related to urgent pending policy issue of Gyeonggi-do Education Office policy department or to prepare substitute policy plan

Center for Education Statistics



Objective

- Strengthen R&D on education survey and statistics
- Provide data required for decision making such as Gyeonggi education policy establishment and budget assignment, etc



Contents

- Gyeonggi education longitudinal research (GEPS) implementation
- Statistics analysis method related education
- Gyeonggi-do Education Office statistics survey consulting
- Entrusted statistics and survey service business
- Managing Gyeonggi education longitudinal research utilization academic meeting
- Statistics material database establishment

School Education Support Project

Analysis and Diagnosis of Educational Policy

- Purpose** • Establishing a virtuous circle that is policy-budget-assessment
- Target** • Officers and teachers at Gyeonggi-do Office of Education(part-time staffs, visiting scholars)
- Contents** • Analysis and diagnosis of major educational policies and projects of Gyeonggi-do Office of Education/ Publishing reports of analysis and diagnosis of educational policy
- Utilization** • Assessment of educational policies
• To be reflected in the next year's basic plan

Policy Academy

- Purpose** • Fostering researchers in future educational policy
- Target** • Officers and teachers at Gyeonggi-do Office of Education
- Contents** • Learning and discussions, lectures, and group activities regarding educational innovation of Gyeonggi and publishing issue papers

Gyeonggi Education Forum and Symposium

- Purpose** • Setting up of agendas for education and its expanding
• Listening of opinions and voices from people in the education field
- Contents** • Pending issues of education and agendas for an educational reform

Cyber Learning

- Purpose** • Improving basic learning skills and academic performance and reducing private education costs
- Target** • Free to use for students and teachers
- Contents** • Conducting joint development with other provinces and cities in Korea, spreading of learning content, and providing the free supply of evaluation materials(To utilize in teaching and learning)
- Official Website** • <http://danopy.kr>

Educational library

- Material in Collections** • Providing research level collections and materials in the education field and services
- Open Hours** • Weekdays 9:00~18:00 (except 12:00~13:00)/Closed on weekends and holidays
- Services** • Borrowing(only available to researchers and staffs at Gyeonggi Institute of Education, and staffs and officers at Gyeonggi-do Office of Education)
• Library use only and copying service(opening to general public)
- Inquiries** • Phone: +82-31-8012-0964
- Official Website** • <http://library.gie.re.kr>